

RCMMS

Remote Control & Monitoring Management Software



The ATEN RCMMS is a Windows-based management software that provides convenient single-point access, monitor, and customizable control to multiple RCM devices within a network. By consolidating all types of RCM devices, such as KVM over IP extenders (e.g. RCMDV100AT) and single-port (e.g. [RCMVGA101](#)) and multi-port KVM over IP switches (e.g. RCM416), RCMMS fulfills the administrators' need of centralized management of IT infrastructures in production lines even across isolated, secured environments.

Featuring Panel Array and WinClient viewer, RCMMS allows operators to easily monitor up to 25 device ports simultaneously in a single 5 x 5 view and provides instantaneous remote access to any specific PC / workstation as needed. Additionally, its Panel Array Grouping and single sign-on functions allow the consolidated management of all ATEN RCM devices for easy and convenient operation.

The RCMMS implements visualized flow charts which allow users to set advanced RPA (robotic process automation) scripts that can be executed according to a specified schedule with ease. It also provides flexible image settings suited for a variety of applications, as well as the popping up and enlarging viewer access onto a dedicated screen by double-click during monitoring, empowering operators to promptly deal with any urgent cases encountered.

With the help of RCMMS, operators in varying industries can immediately respond to and fix any issues and problems arose at a production line efficiently, putting them in complete control. RCMMS is an outstanding management software solution for high-tech production lines requiring durable and reliable over-IP server management.

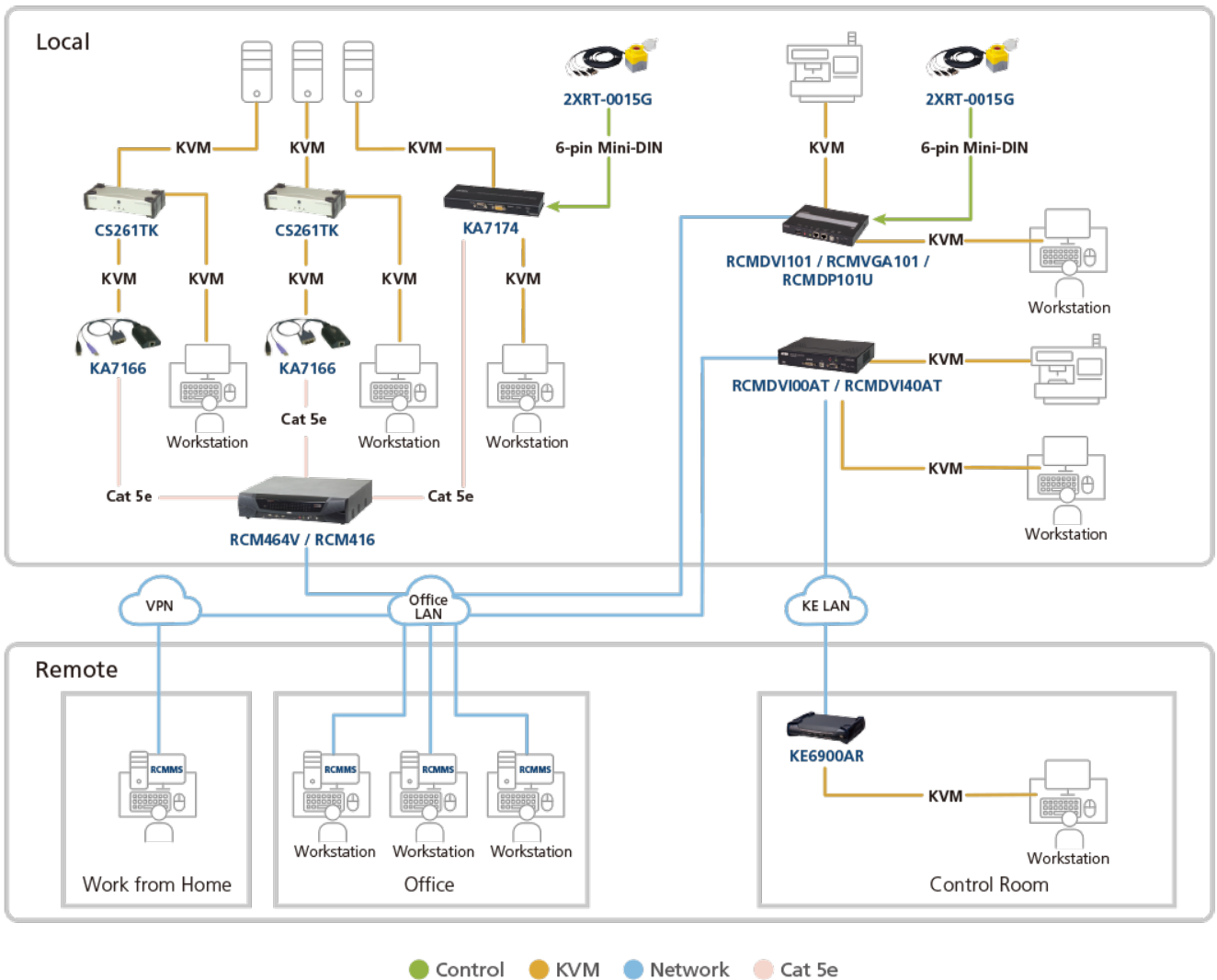
Features

- Device and Panel Array Grouping for easy, convenient management
- Single sign-on to consolidate the management of all ATEN RCM devices
- AD server authentication for convenient account management
- Visualized RPA flow charts – allow users to set advanced RPA scripts that can be executed according to a specified schedule
- Flexible image setting for various, all-encompassing applications
- Instantaneous remote access to RCM device ports by double-clicking for emergency management via WinClient viewer
- Customizable Panel Array layout for up to 25 (5 x 5) simultaneous port monitoring
- Supports full screen pre-view and WinClient viewer in a maximal size
- Event notification and Access Control Box pushbutton alert
- Log records for easy tracking – able to store RCMMS system log records so operators can analyze past usability and plan future optimization
- Supports up to 10 language options
- Customized theme and logo for OEM customers, as well as customizable settings to meet the various customer needs and different applications
- Export / import of all RCMMS settings, including device group list for easy deployment
- Two types of user account that can be configured for easy management – Administrator and User. Administrators have full access and configuration rights to the RCMMS and all RCM devices / ports added while users have access and configuration rights only to the RCM devices / ports they are authorized for
- Device / Port status indication – supports up to 5 kinds of device status that are indicated by icons to easily identify the connection status of all devices / ports at a glance

Specification

License	
License Options	RCMMS001BAO (RCMMS basic version license for 1 port) RCMMS001AAO (RCMMS advanced version license for 1 port)
Viewer	WinClient Panel array mode (up to 5x5)
Compatible Appliances	
KVM over IP switches	RCM101A/RCMDVI101/RCMVGA101/RCMDP101U/RCMHD101U RCM416A/RCM816A/RCM416VA/RCM432VA/RCM464VA RCMDVI00AT/RCMDVI40AT/RCMDVI00BT/RCMDVI40BT/RCMDVI50T
Authentication & Authorization	Local user account authentication and management (administrator and normal user) Data store is secured by AES-256 encryption
Notification	System messages
Task scheduling	Export/Import database and configuration backup/restore (.db) Export/Import user accounts (.xlsx) Export/Import device lists (.dev) Export logs (.log)
Logs	System logs Device logs
Supported OS	Windows 7 or above
Multilingual Support	English, 繁體中文, 简体中文, 日本語, 한국어, Française, Español, Português, Deutsch, Русский.
Minimum Hardware Requirements	CPU: Intel® Core™ i5 CPU or above Memory: 8GB or above Hard drive: RCMMS taking up around 400 MB Ethernet: Giga LAN recommended

Diagram



ATEN International Co., Ltd.

3F, No.125, Sec. 2, Datong Rd., Sijhih District., New Taipei City 221, Taiwan
 Phone: 886-2-8692-6789 Fax: 886-2-8692-6767
 www.aten.com E-mail: marketing@aten.com



© Copyright 2015 ATEN® International Co., Ltd.
 ATEN and the ATEN logo are trademarks of ATEN International Co., Ltd.
 All rights reserved. All other trademarks are the property of their respective owners.