

CM1942

2-Port 4K DisplayPort Dual Display Mini-Matrix Boundless KVM Switch



Jump Start Desktop Productivity

Multitask with Seamless Workflows between 2 Computers and 2 Displays



CM1942

2-Port 4K DisplayPort Dual Display Mini-Matrix Boundless KVM Switch



With hybrid working evolving to become the standard in the new normal, the key to tackling challenges is to elevate multitasking abilities. When it comes to performing multiple tasks simultaneously, ergonomics is what assures productivity. And when communicating with dispersed remote teams, effective collaboration tools are crucial. Re-imagine your workspace with the CM1942 – a future-proof mini matrix KVM switch featuring flexible and boundless KVM switching between two computers/displays to maximize workstation efficiency. Incorporating speedy peripheral data sharing, audio mixer, multi-screen efficiency and hotdesking agility, the CM1942 promotes a productive yet better normal with streamlined desktop workflows for both desktop tasks and collaborative work.



Superior Video Clarity



Boundless Switching



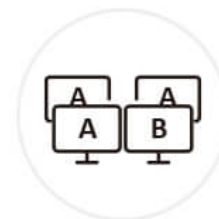
Video DynaSync™



Audio Mixer



USB Peripheral



Dual-Display Matrix

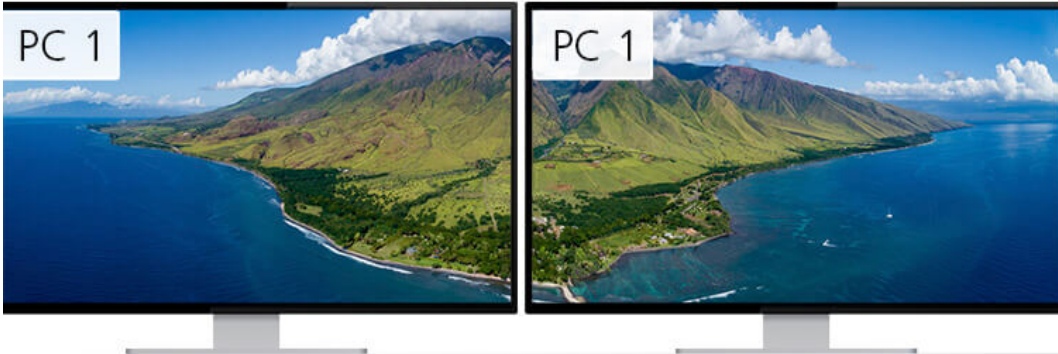
Exceptional 4K Audiovisual Performance

The CM1942 empowers your desktop operations with connectivity to two DisplayPort computers and two HDMI displays, providing a remarkable user experience with exceptional 4K audiovisual enhancement.

**Dual-Display Setting to Facilitate Matrix KVM Switching**

The CM1942's dual-display setting simplifies KVM switching in a 2x2 computer/monitor matrix. The main and extended desktops of either computer with the current KVM focus can be displayed over two monitors. Likewise, each computer's content can be displayed on either monitor separately in a crossover configuration as well, regardless of the KVM focus.

Single PC Mode



Dual PC Mode



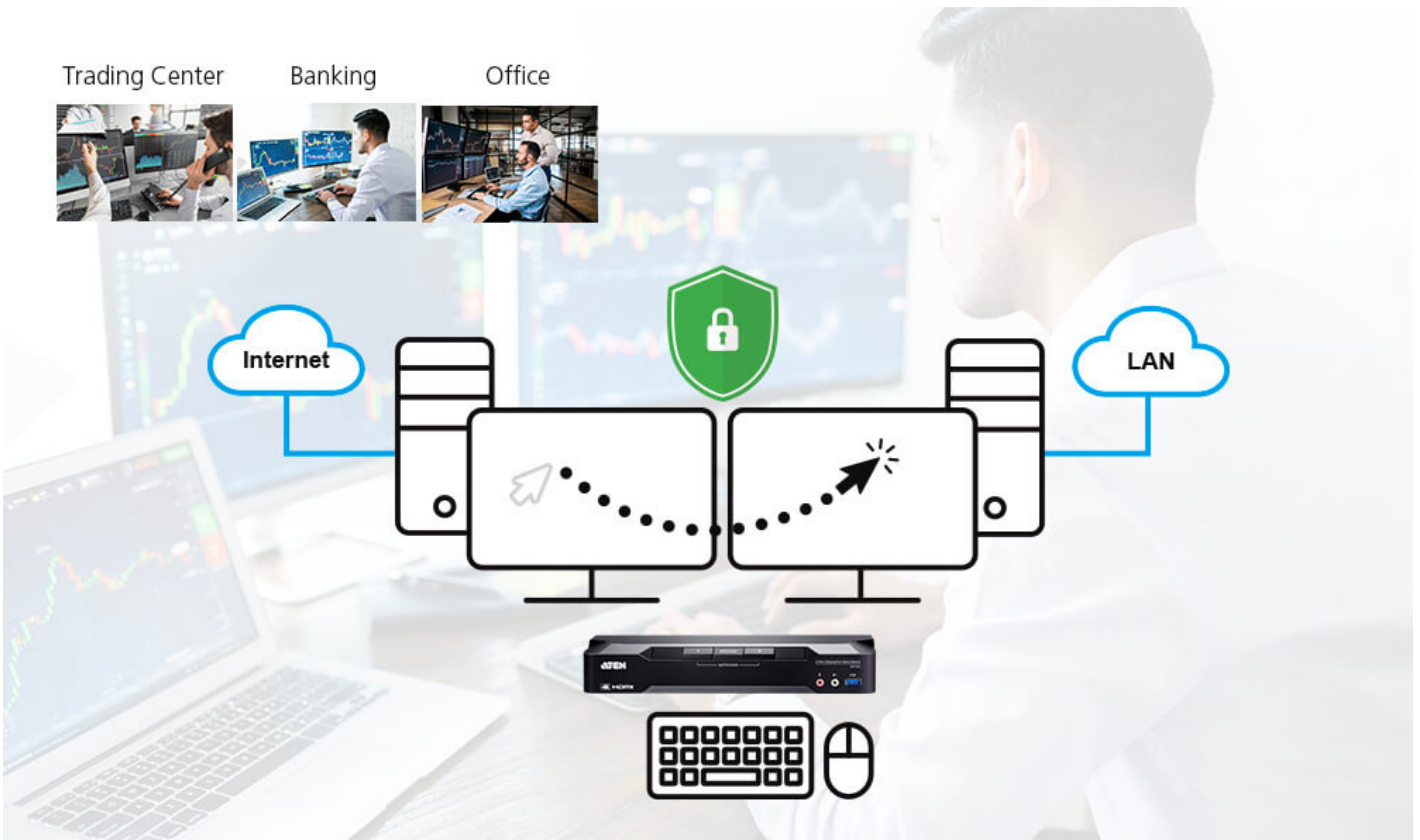
Intuitive Boundless Switching to Expedite Desktop Operations

The CM1942 enables quick switching between two computers by allowing the mouse cursor to move across the screen borders onto another screen instantaneously, for easy and straightforward switching between sources.



Network Separation

With agile KVM switching, operations on each PC can be undertaken independently or collaboratively over dual monitors, while network settings with each PC can be different (e.g. Internet and LAN) to enable separated workflows with enhanced data security for transactions that need to be safeguarded and without vulnerabilities, such as in banks or trading centers.



Audio Mixer Mode to Enhance Situational Awareness

Sound can serve as a helpful alert for better situational awareness while multitasking. With the Audio Mixer mode in place, the audio and sound coming from both computers can be mixed up in one output during all desktop operation, regardless whichever computer you're working on at the moment.

**Flexible Port Selection**

Port switching with the CM1942 is flexible and you can choose from pushbuttons, hotkeys, mouse and the remote port selector, whichever works best for you and your workflows.



Contact Us

Get a quote for this product or get in touch with our sales experts

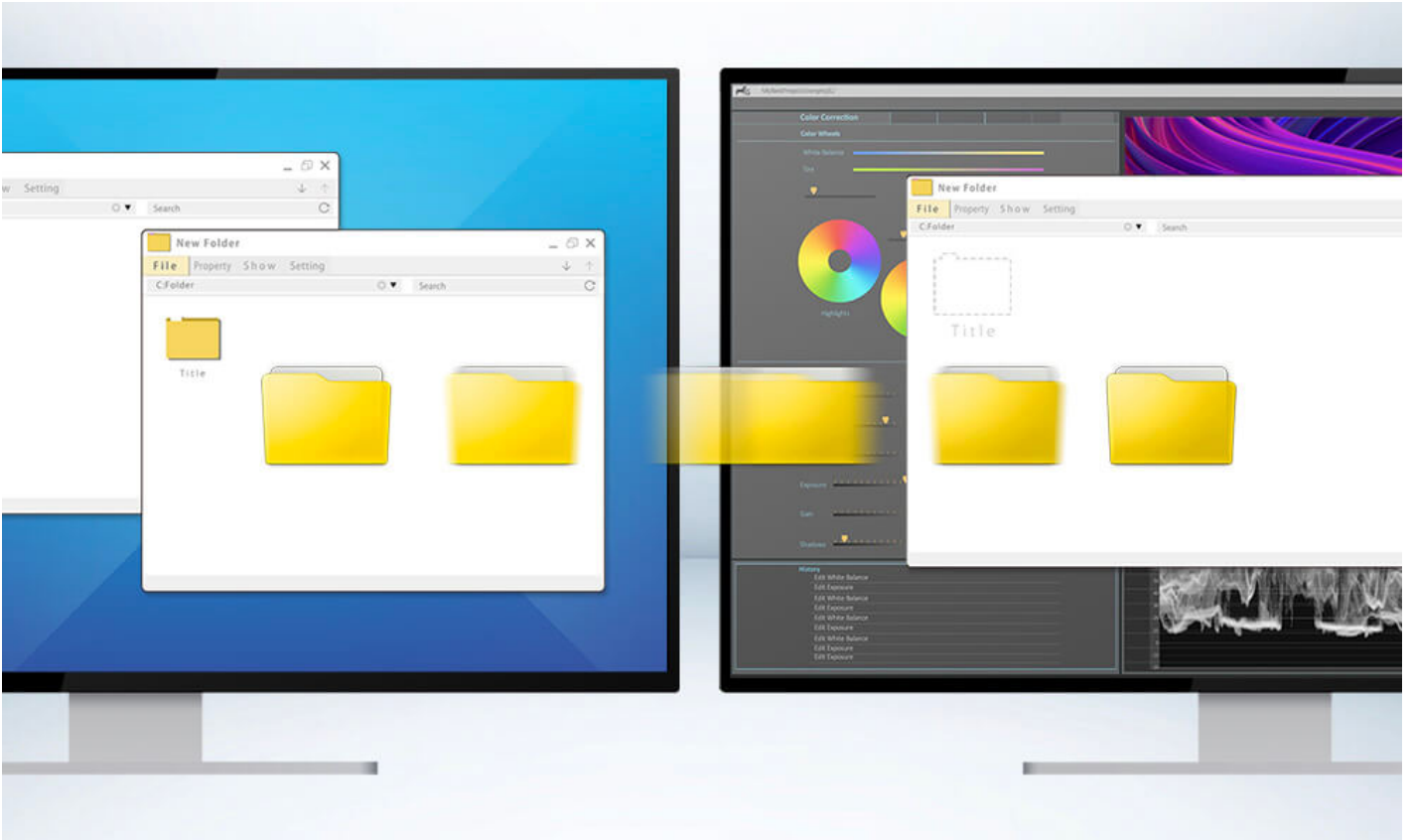
[Get Quote](#)

[Contact Sales](#)

Peripheral Sharing

Media and data sharing between computers is fast and effortless via plug-n-play connection (e.g. hard drive, flash drive, printer, etc) to the USB hub on

the KVM switch.



Applications

The compact CM1942 is best suited to multitasking operations in any desktop workspace setting where streamlined workflows and collaborations are pursued.



Hybrid Worker / Efficient team collaboration

The desire to re-gain work-life balance has catalyzed into a workforce shift that reflects new priorities and a new flex-focused status quo. Stay flexible and connected with your crew or team members while working remotely is one of the best practices in the new normal. With the Dual PC mode, two different tasks from two computers can be performed separately and simultaneously across two monitors with only one set of keyboard/mouse, sparking work productivity.

Hot Desking / Hybrid-Work styled office

Since the adoption of the hybrid work style has become prevalent, setting up workspaces for different teams or taskforces is being introduced to many enterprises and corporations. Instead of assigned desks, the deployment of the CM1942 helps employees of different shifts learn to share the same workspace or workstation where computers and monitors are preset on the desk and can be plug-n-played in no time to get started right away.



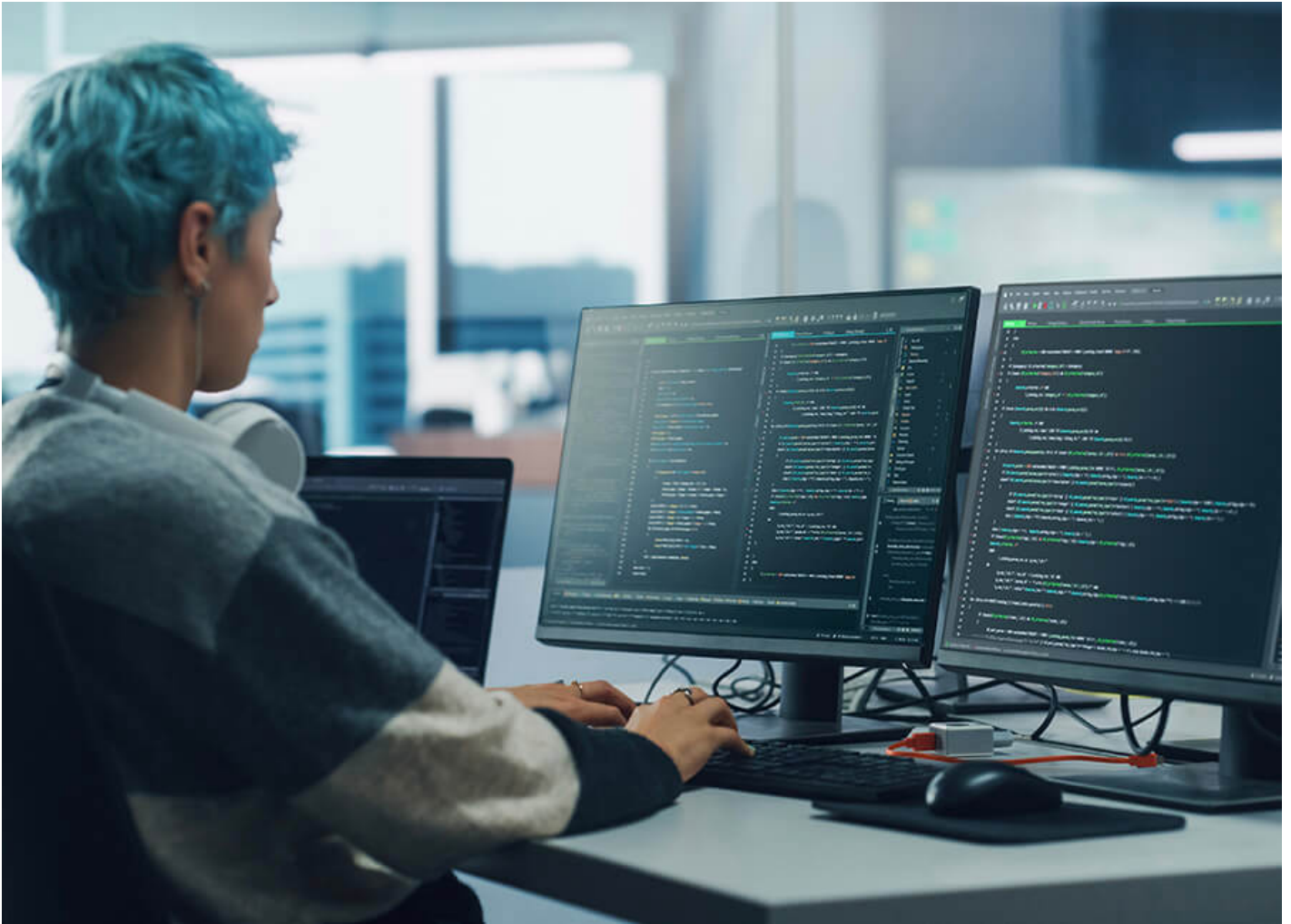
**Financial Analyst / Intensive data cross-referencing**

The CM1942 is good for those who need increased productivity and high precision for multitasking between two computers to monitor diverse content sources over two displays, such as trading indicators and sales charts for financial and market analysis. In addition, these multi-computer setups can serve as a backup to avoid downtime and financial losses caused by potential equipment failure.

Home Office / Flex for work and entertainment

As hybrid work continues, renovating a comfortable workspace at home does wonders in helping to maintain work-life balance. Sharing one set of keyboard, mouse and dual displays to switch between work and entertainment across two computer systems provides an effective and innovative way of multitasking in home office.



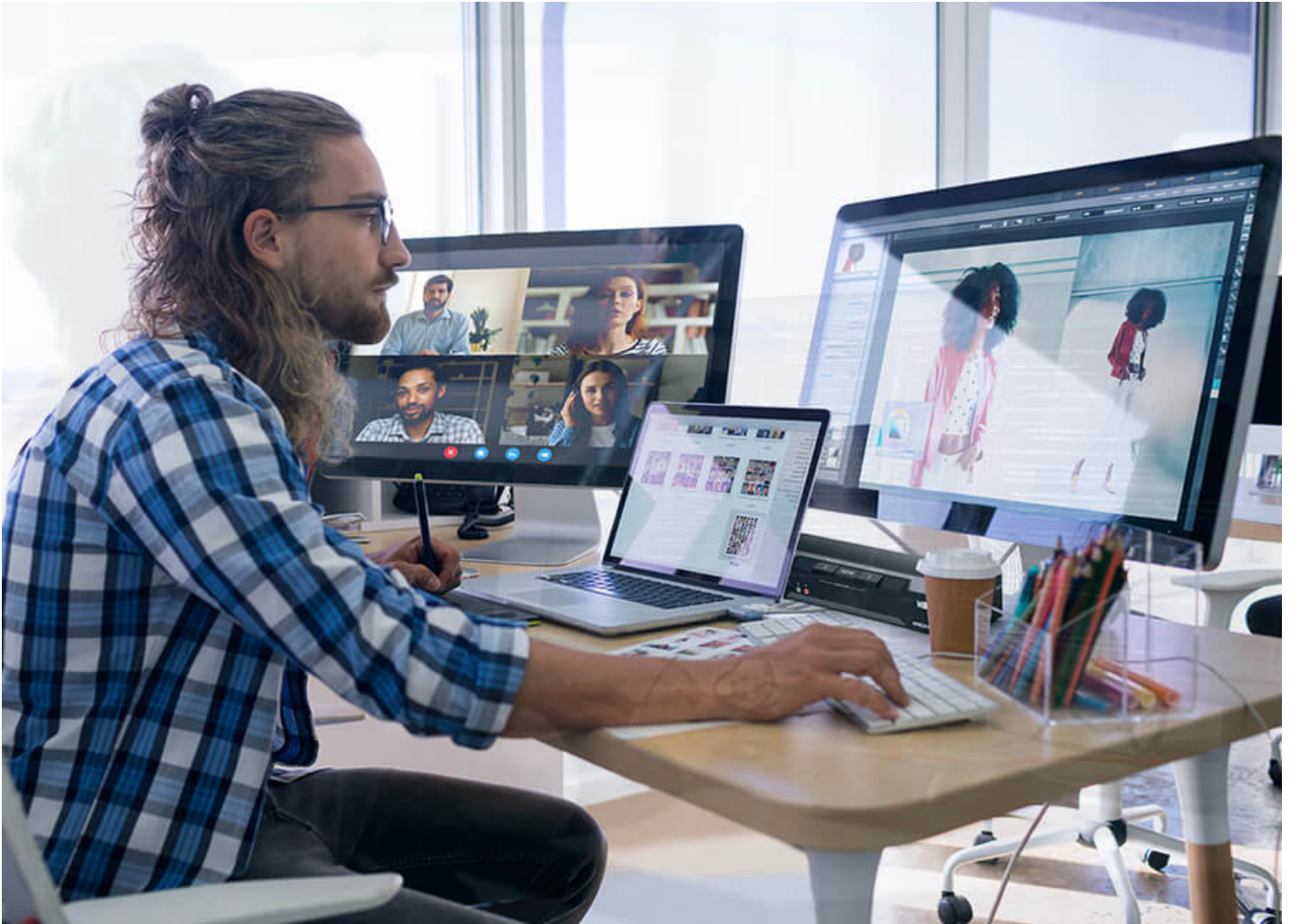


Engineer / Productive software development

Having a development environment based on a multi-computer-monitor configuration can be a real productivity booster. Separating code editing from building the executable can be efficient when different tasks are undertaken in different computers while examined over two screens for timely checkup and debugging.

Computer Graphic Design / Streamlining workflows

Creative professionals such as multimedia designers, CAD engineers, and videographers often need to multitask between two computers in a cross-monitor setup for data-intensive creative tasks, including image rendering, photo editing, image capturing, and footage editing. This is when the CM1942 comes in handy for, enabling timely switching between two computer systems to uplift work productivity.



Talk to Our Experts

If you prefer to have ATEN contact you, please complete the form and a representative will be in touch with you shortly

First Name *

Last Name *

- Country *

Company *

Email *

Phone Number *

- Customer Type *

Job Title *



Features

The CM1942 2-Port 4K DisplayPort Dual Display Mini-Matrix Boundless KVM Switch, combining a 2-port DisplayPort switch and a 2-port USB 3.1 Gen 1 hub, is designed to provide instant access to two DisplayPort computers via a single USB / HDMI console. The CM1942 features two PC Operation Modes to facilitate KVM switching in a 2x2 PC / monitor matrix. In Single PC Mode, content of the PC with the current KVM focus can be displayed over both monitors; Dual PC Mode, on the other hand, allows content of both PCs to be displayed separately on two monitors regardless of the KVM focus.

Advanced video support provides a better-defined HDMI connection with vivid video resolutions up to 4K DCI (4096 x 2160 @ 60 Hz). With the CM1942, users can quickly and effortlessly switch between two computers by using convenient pushbuttons, hotkeys, mouse wheel, mouse cursor, and remote port selector. Featuring Boundless Switching, the CM1942 allows users to simply move the mouse cursor across windows to switch to other video sources. This makes it easier to instantly access and control a target computer. With the built-in 2-port USB 3.1 Gen 1 hub, access to connected peripherals is easy between two computers while peripheral switching is independent of the KVM focus. In addition, the CM1942 allows data transfer rate up to 5 Gbps for maximum multimedia operation efficiency, making desktop multitasking effortless and more productive.

Engineered to meet the ever-increasing demands for dual displays, ultra-fast data transmission rates, and lossless 4K video resolution, the CM1942 is specifically designed for applications in which multitasking is vital such as graphic design, financial trading, and video post production.

- One dual-view USB / HDMI console controls two DisplayPort computers and two USB 3.1 Gen 1 peripherals
- Supports superior video quality – resolutions up to 4K DCI (4096 x 2160 @ 60 Hz)
- Two PC Operation Modes:
 - Single PC Mode – allows content of the PC with current KVM focus to be displayed over both monitors
 - Dual PC Mode – allows content of two PCs to be displayed separately on two monitors regardless of the KVM focus
- Computer selection via pushbuttons, hotkeys, mouse wheel, mouse cursor, and remote port selector
- Boundless Switching – allows the mouse cursor to move across screen borders for quick switching between video sources
- Video DynaSync™ – exclusive ATEN technology eliminates boot-up display problems and optimizes resolutions when switching between ports
- Audio Mixer Mode – mixes up to two audio sources as one audio output
- DisplayPort 1.2, HDMI, and HDCP compliant
- Built-in 2-port USB 3.1 Gen 1 hub with SuperSpeed 5 Gbps data transfer rates
- Power on detection
- Console mouse port emulation / bypass feature supports most mouse drivers and multifunction mice
- Console keyboard emulation / bypass feature supports most multimedia keyboards
- Multilingual keyboard mapping – supports English, French, Japanese, and German keyboards

Specification

Computer Connections	2
Port Selection	Hotkey, Pushbutton, Mouse Wheel, Mouse Cursor, Remote Port Selector
Connectors	
Console Ports	2 x USB Type A Female 2 x HDMI Female (Black) 2 x 3.5mm Audio Jack Female (Green; 1 x front, 1 x rear) 2 x 3.5mm Audio Jack Female (Pink; 1 x front, 1 x rear)
KVM (Computer) Ports	2 x USB3.1 Gen1 Type B Female (Blue) 4 x DisplayPort Female (Black) 2 x 3.5mm Audio Jack Female (Green) 2 x 3.5mm Audio Jack Female (Pink)
Remote Port Selector	1 x 2.5mm Audio Jack Female
Power	1 x DC Jack
USB Hub	2 x USB3.1 Gen1 Type A Female (Blue; 1 x front; 1 x rear)
Switches	
Selected	3 x Pushbutton
LEDs	

Audio	2 (Green)
KVM	2 (Orange)
USB	2 (Green)
Mode of Operation	2 (Orange)
Emulation	
Keyboard / Mouse	USB
Video	4096 x 2160 @ 60Hz
Scan Interval	1-99 Seconds (Default: 5 sec.)
Power Consumption	DC12V:11.58W:97BTU/h Note: <ul style="list-style-type: none"> ● The measurement in Watts indicates the typical power consumption of the device with no external loading. ● The measurement in BTU/h indicates the power consumption of the device when it is fully loaded.
Environmental	
Operating Temperature	0-40°C
Storage Temperature	-20-60°C
Humidity	0-80% RH, Non-condensing
Physical Properties	
Housing	Metal
Weight	0.64 kg (1.41 lb)
Dimensions (L x W x H)	26.00 x 7.18 x 4.25 cm (10.24 x 2.83 x 1.67 in.)
Note	For some of rack mount products, please note that the standard physical dimensions of WxDxH are expressed using a LxWxH format.

Diagram

□

ATEN International Co., Ltd.

3F., No.125, Sec. 2, Datong Rd., Sijhih District., New Taipei City 221, Taiwan
 Phone: 886-2-8692-6789 Fax: 886-2-8692-6767
 www.aten.com E-mail: marketing@aten.com



© Copyright 2015 ATEN® International Co., Ltd.
 ATEN and the ATEN logo are trademarks of ATEN International Co., Ltd.
 All rights reserved. All other trademarks are the property of their respective owners.