

## KN2124VA

1-Local/2-Remote Access 24-Port Multi-Interface Cat 5 KVM over IP Switch



ATEN's 4th generation of KVM over IP switches exceed expectations. The KN2124VA feature superior video quality with Full HD resolutions up to 1920 x 1200, FIPS 140-2 with level 1 security standards and virtual media transmissions at twice the normal speed.

The KN Series provides a local console and remote over IP access for users to monitor and access their entire data center over a network.

**Exclusive KN Series Features:**

- High-grade security – supports FIPS 140-2 level 1 security standards
- 2x faster virtual media transmission speeds
- Advanced FPGA graphics processor with Full HD resolutions up to 1920 x 1200

With dual on-board NICs and dual power supplies, the KN Series is built for reliability, to ensure 24/7 availability of remote access to all servers.

The KN series offers out-of-band (OOB) management that enables IT administrators to manage network devices (e.g. server, storage, router/switch) in server rooms via management networks that are separate from the main/production networks. So if there's difficulty in accessing the network devices through the production network, the administrators can still access them via the KVM switch. The KVM switch offers several out-of-band access methods, such as a direct console connection from a local computer, a USB console connection from a laptop, or a dedicated management network connection via the Ethernet (LAN) port.

The KN Series can be integrated into ATEN's [CC2000](#) Management Software. [CC2000](#) puts administrators in complete control of remote data centers and branch offices no matter where they are in the world – allowing them to remotely monitor and control all devices on a network, including blade server chassis, individual blades and virtual machines.

Additional exclusive features of ATEN KVM over IP switches include: a Message Board, Panel Array Mode™, Mouse DynaSync™ and the Adapter ID function.

A Windows Client and a Java Client are available for remote access. They allow IP connection and login from anywhere over the internet. In addition, ATEN also provides an iOS APP - PadClient, whose intuitive interface makes it easy to connect to the KVM over IP switch and control computers direct from your iPad. Please visit the [PadClient webpage](#) for more information.

ATEN KVM over IP switches save you time and money by allowing administrators to manage their data centers from practically anywhere – minimizing travel and Mean Time To Repair (MTTR) costs and ensuring the highest availability for data center services.

**Features**

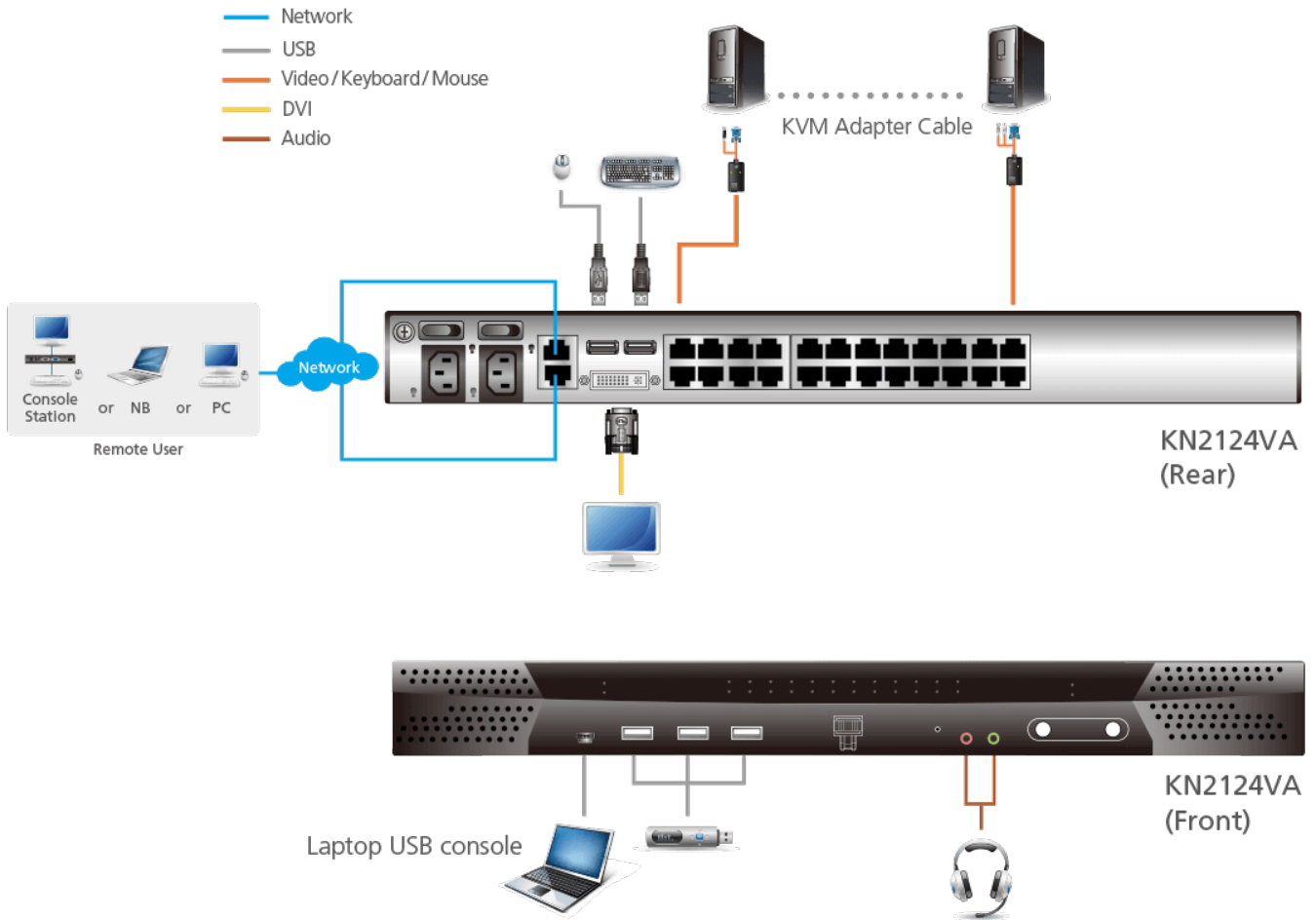
- **Exclusive KN Series Features**
- High-Grade Security – supports FIPS 140-2 level 1 security standards that use an embedded FIPS 140-2 certified OpenSSL cryptographic module (Certificate #1747, #2398, #2473)
- Advanced FPGA graphics processor with Full HD resolutions up to 1920 x 1200
- 2x faster virtual media transmission speeds
- Simultaneously share one local console and two independent connections to servers
- **Hardware**
- High Port Density – RJ-45 connectors for up to 40 ports in 1U housing
- Laptop USB Console (LUC) – a dedicated USB port directly connects to a laptop for easy console operation
- Two separate buses for remote KVM over IP access
- [Two 10/100/1000 Mbps NICs for redundant LAN or dual IP operation](#)
- [Blade server support](#)
- Supports PS/2, USB, Sun Legacy (13W3) and serial (RS-232) connectivity
- Local console provides USB keyboard and mouse support
- Supports multiplatform server environments: Windows, Mac, Sun, Linux and VT100 based serial devices
- [Audio enabled](#)
- [Dual Power Supply](#)
- [High video resolution – up to 1920 x 1200 @ 60Hz \(50m\) with 24-bit color depth at the switch's local console and on remote session displays](#)
- Monitor and control up to 24 computers on a single level or control up to 384 computers in a cascade\*
- \* Cascade-compatible KVM switches include the following: [CS9138](#), [KH1508A](#), [KH1516A](#), and [KH1532A](#)
- **Management**
- Up to 64 user accounts
- Up to 32 concurrent logins
- [Green IT Fan – speed varies according to temperature](#)
- Event logging and Windows-based Log Server support
- [Critical system event notification via SMTP email; SNMP trap and Syslog support](#)
- [Customizable events notification](#)
- Firmware upgradeable
- [Adapter ID Function – stores port information, allowing administrators to relocate servers to different ports without having to re-configure adapters or switches](#)
- Port Share Mode – allows multiple users to gain access to a server simultaneously
- Integration with ATEN [CC2000](#) Management Software
- Integration with ATEN [CCVSR](#) Video Session Recording Software\*
- [IPv6 capable](#)
- \*supports recording computer operations accessed through the local console and via remote sessions.
- **Easy-to-Use Interface**
- [ATEN Exclusive Panel Array™ Mode – monitor all ports in a grid display of all desktops at both the local and remote screen](#)
- Multiplatform client support (Windows, Mac OS X, Linux, Sun)
- Multi-browser support: Internet Explorer, Chrome, Firefox, Safari, Opera and Netscape
- Browser-based UI in pure Web technology allows administrators to perform administrative tasks without pre-installed Java software
- Launch multiple virtual remote desktop sessions to control multiple servers at the same time
- Fullscreen or scalable virtual remote desktop window
- [Keyboard/Mouse Broadcast – keyboard and mouse signals can be duplicated across all servers at once](#)
- [Video syncing with the local console – local console monitor's EDID information stored on the KVM Adapter Cables for display resolution optimization](#)
- **Advanced Security**
- [Remote authentication support: RADIUS, LDAP, LDAPS and Microsoft Active Directory](#)
- Supports TLS 1.2 encryption and RSA 2048-bit certificates to secure browser logins
- Flexible encryption design allows users to choose any combination of DES, 3DES, AES, RC4, or Random for independent KB/Mouse, video, and virtual media data encryption
- [Supports IP/MAC address filtering](#)
- Configurable user and group permissions for server access and control
- Automated CSR creation utility and third-party CA certificate authentication
- **Virtual Media**
- Virtual media enables applications, OS patching, software installations and diagnostic testing
- Works with USB-enabled servers at the operating system and BIOS level
- [Supports DVD/CD drives, USB mass storage devices, hard drives and ISO images](#)
- **Virtual Remote Desktop**
- Video quality can be adjusted to optimize data transfer speeds; monochrome color depth, threshold and noise settings reduce data transmission to lower bandwidth
- Fullscreen or scalable window for desktop sessions
- [Message Board for communication among remote users](#)
- [Mouse DynaSync – automatically synchronizes the local and remote mouse movements](#)
- [Exit Macro support](#)
- [On-screen keyboard with multi-language support](#)
- BIOS-level access for troubleshooting

**Specification**

Console Connections	
Local	1
Remote	2
Computer Connections	
Direct	24
Maximum	512 (via Cascade)
Port Selection	Pushbuttons, Hotkeys, GUI
Connectors	
Console Ports	2 x USB Type-A Female (White) 1 x DVI-I Female (White)
USB Port	3 x USB Type-A Female

Audio	2 x Audio Jack Female
Laptop USB Console (LUC) Port	1 x USB Mini-B Female
KVM Ports	24 x RJ-45 Female
LAN Ports	2 x RJ-45 Female
Power	2 x IEC 60320/C14
Switches	
Port Selection	2 x Pushbuttons
Reset	1 x Semi-recessed Pushbutton
Power	2 x Rocker Switches
LEDs	
Online / Selected	24 (Green/Orange)
Link 10 / 100 / 1000 Mbps	2 (Red/Orange/Green)
Power	2 (Blue)
Emulation	
Keyboard / Mouse	PS/2; USB
Video	
Local	1920 x 1200 @ 60Hz
Remote	1920 x 1200 @ 60Hz
Scan Interval	1 – 255 Sec
Maximum Input Power Rating	100–240V~ ; 50-60Hz; 1A
Power Consumption	AC110V:34.3W:198BTU/h AC220V:34.3W:198BTU/h  Note: <ul style="list-style-type: none"> <li>● The measurement in Watts indicates the typical power consumption of the device with no external loading.</li> <li>● The measurement in BTU/h indicates the power consumption of the device when it is fully loaded.</li> </ul>
Environmental	
Operating Temperature	0 - 40°C
Storage Temperature	-20 - 60°C
Humidity	0 - 80% RH, Non-condensing
Physical Properties	
Housing	Metal
Weight	5.48 kg ( 12.07 lb )
Dimensions (L x W x H)	43.36 x 41.21 x 4.40 cm (17.07 x 16.22 x 1.73 in.)
Note	For some of rack mount products, please note that the standard physical dimensions of WxDxH are expressed using a LxWxH format.

Diagram



**ATEN International Co., Ltd.**

3F., No.125, Sec. 2, Datong Rd., Sijhih District., New Taipei City 221, Taiwan  
 Phone: 886-2-8692-6789 Fax: 886-2-8692-6767  
 www.aten.com E-mail: marketing@aten.com



© Copyright 2015 ATEN® International Co., Ltd.  
 ATEN and the ATEN logo are trademarks of ATEN International Co., Ltd.  
 All rights reserved. All other trademarks are the property of their respective owners.