

VS1508

8-Port VGA/Audio/RS-232 Cat 5 Splitter



The VS1508 Cat 5 Audio/Video Splitter is a splitter designed to connect one source to 8 displays over a long distance. Incorporating suggested compatible receivers *, the VS1508 A/V Over Cat 5 Splitter can be a complete solution ideal for any professional A/V installation that requires multimedia content to be delivered to multiple destinations located up to 500 m away from the source.

* Suggested Compatible Receiver Units:

[VB552](#) VGA Over Cat 5 Repeater + Audio

[VE200R](#) Audio/Video Receiver

Cascadable to three levels, the VS1508 can support thousands of displays when combined in an installation with ATEN repeaters or extenders. Incorporating RS-232 connectivity so serial devices such as touchscreens can be included in the installation.

The solution is perfect for a wide range of applications:

- In-store or tradeshow digital signage
- Broadcasting information to public locations
- Sporting events
- Theater and lecture overview rooms
- Classroom and company training facilities

Opties

- One video input to 8 video outputs
- Cascadable to three levels - provides up to thousands of video signals when combined in an installation with ATEN receiving devices*
- Audio and serial enabled
- Uses Cat 5e (or higher) cable to extend displays up to 150 m, 450 m when combined with aten receiving devices
- High quality video - supports 1920 x 1200 @ 60Hz
- Group screens off/on function
- Provide a RS-232 channel for selection**

*Receiving Devices

a. ATEN [VB552](#) (VGA Over Cat 5 Repeater)

b. ATEN [VE200R](#) (Audio/Video Extender)

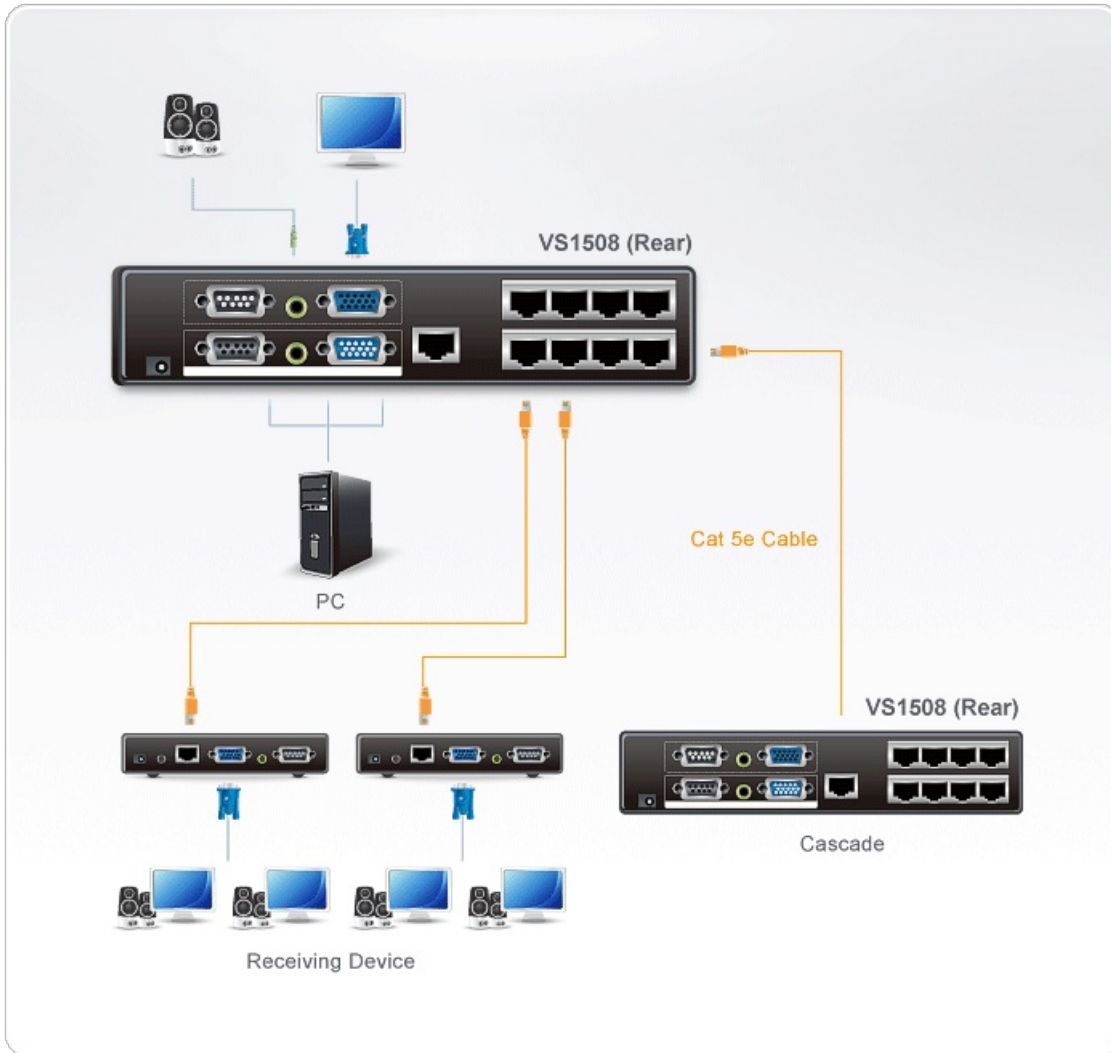
** Only one RS-232 channel can be selected at a time

Specificaties

Video Invoer	
Interface's	1 x HDB-15 Male (Blue)
Verhinderend	75 Ω

Maximale Afstand	1.8 m
Video Uitgang	
Interface's	1 x HDB-15 Female (Blue) - Local Output 8 x RJ-45 Female
Verhinderend	75 Ω
Video	
Maximale Bandbreedte	300 MHz
Maximale Resoluties / Afstanden	Up to 1920 x 1200@60Hz@30m; 1280 x 1024@60Hz@150m
Geluid	
Invoer	1 x Mini Stereo Jack Female (Green)
Uitgang	1 x Mini Stereo Jack Female (Green)
Controle	
RS-232	Connector: 1 x DB-9 Female (Black); 1 x DB-9 Male (Black)
Connectoren	
Stroom	1 x DC Jack (Black)
Stroomverbruik	DC5.3V:7.93W:37BTU/h Let op: <ul style="list-style-type: none"> ● De meting in Watt geeft het typische stroomverbruik van het apparaat zonder externe belasting aan. ● De meting in BTU/h geeft het stroomverbruik van het apparaat aan wanneer het volledig wordt belast.
Omgeving	
Operatietemperatuur	0-50°C
Opslagtemperatuur	-20 - 60°C
Vochtigheid	0 - 80% RH, Non-Condensing
Fysieke Eigenschappen	
Behuizing	Metal
Gewicht	0.76 kg (1.67 lb)
Afmetingen (L x B x H)	21.00 x 8.80 x 5.55 cm (8.27 x 3.46 x 2.19 in.)
Kartonnen Partij	5 pcs
Let op	Houd er bij sommige producten voor rekmontage rekening mee dat de standaard fysieke afmetingen van BxDxH worden uitgedrukt in een LxBxH-formaat.

Diagram



ATEN International Co., Ltd.

3F., No.125, Sec. 2, Datong Rd., Sijhih District., New Taipei City 221, Taiwan
Phone: 886-2-8692-6789 Fax: 886-2-8692-6767
www.aten.com E-mail: marketing@aten.com



© Copyright 2015 ATEN® International Co., Ltd.
ATEN and the ATEN logo are trademarks of ATEN International Co., Ltd.
All rights reserved. All other trademarks are the property of their
respective owners.