

VE814R

HDMI HDBaseT Receiver with Dual Output (4K@100m)
(HDBaseT Class A)



Place your HDMI displays up to 100 meters away from your HDMI source devices with the VE814R HDMI Receiver over single Cat 5 with Dual Display. Connecting to the [VE814T](#) transmitter via affordable and easily available Cat 5e/6 cable, your media can be streamed to up to three HDMI displays – dual displays connected to the receiver and another to the transmitter.

The VE814R also carries an Ethernet pass-through port for Internet connectivity, as well as RS-232 and IR signaling pass-through, which allows you to control the HDMI source device from the remote unit (VE814R) while also granting access to the HDMI display device from the local unit ([VE814T](#)). The VE814R is HDMI (3D, Deep Color, 4K) and HDCP compatible, ensuring superior video quality and peak performance from your HDMI displays.



Features

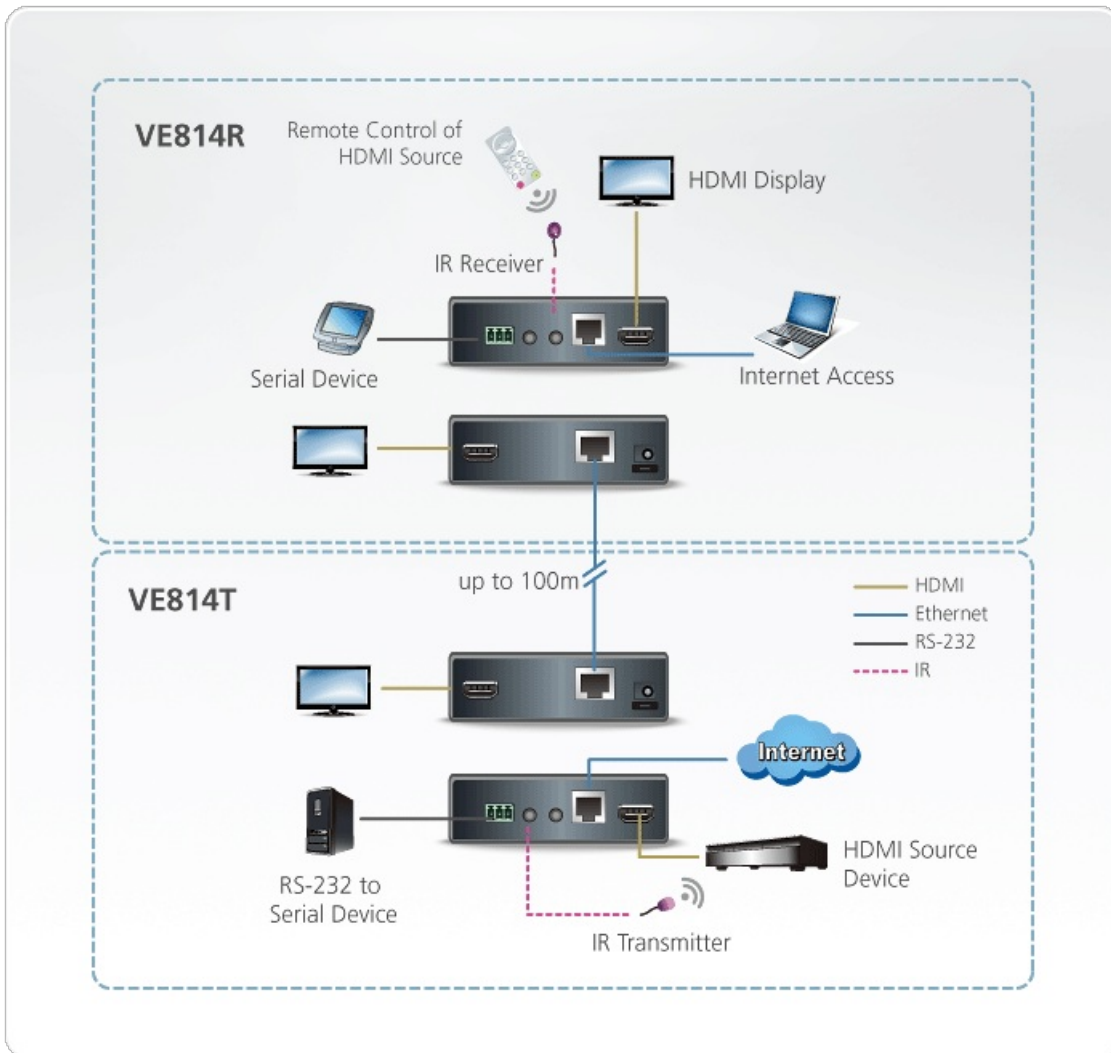
- Extends the distance between HDMI source and HDMI display
- Implements HDBaseT extension technology using only one Cat 5 cable to connect the transmitter and receiver
- Anti-jamming – resists signal interference during high-quality video transmissions using HDBaseT technology
- Supports one local and two remote displays
- Supports two IR channels for bi-directional IR signal transmission
- Extends Ethernet communication with pass-through port
- HDMI (3D, Deep Color, 4Kx2K); HDCP Compatible
- Long distance transmission – up to 100 m
- Supports wide screen
- Supports resolutions of up to Ultra HD 4Kx2K and 1080p Full HD
- Supports up to 340 MHz bandwidth for high performance video
- EDID Expert – selects the optimum EDID settings for smooth power-up and highest quality display
- RS-232 Serial Port for serial device peripherals, such as touch screens, bar coders scanners, and so on
- Built-in 8KV / 15KV ESD protection (Contact voltage 8KV; Air voltage 15 KV)
- Easy to install – no software required
- Rack Mountable

Specifications

| | |
|--------------|--------------------------------|
| Video Output | |
| Interfaces | 2 x HDMI Type A Female (Black) |

| | |
|-----------------------------|--|
| Impedance | 100 Ω |
| Video | |
| Max. Data Rate | 10.2 Gbps (3.4 Gbps Per Lane) |
| Max. Pixel Clock | Up to 340 MHz |
| Compliance | HDMI (3D, Deep Color, 4K) HDCP Compatible Consumer Electronics Control (CEC) |
| Max. Resolutions / Distance | Up to 4K@70m (Cat 5e/6) / 100m (cat 6a); 1080p@100m *4K supported: 4096 x 2160 / 3840 x 2160 @ 60Hz (4:2:0); 4096 x 2160 / 3840 x 2160 @ 30Hz (4:4:4) |
| Audio | |
| Output | 2 x HDMI Type A Female (Black) |
| Control | |
| RS-232 | 1 x Terminal Block, 3 Pole |
| IR | 2 x Mini Stereo Jack Female (Black) |
| Ethernet | 1 x RJ-45 Female |
| Connectors | |
| Power | 1 x DC Jack |
| Power Consumption | 5.3 VDC, 13.3W Note: <ul style="list-style-type: none"> ● The measurement in Watts indicates the typical power consumption of the device with no external loading. ● The measurement in BTU/h indicates the power consumption of the device when it is fully loaded. |
| Environmental | |
| Operating Temperature | 0-50°C |
| Storage Temperature | -20 - 60°C |
| Humidity | 0 - 80% RH, Non-Condensing |
| Physical Properties | |
| Housing | Metal |
| Weight | 0.46 kg (1.01 lb) |
| Dimensions (L x W x H) | 14.17 x 10.30 x 3.00 cm (5.58 x 4.06 x 1.18 in.) |
| Carton Lot | 5 pcs |
| Note | For some of rack mount products, please note that the standard physical dimensions of WxDxH are expressed using a LxWxH format. |

Diagram



ATEN International Co., Ltd.

3F., No.125, Sec. 2, Datong Rd., Sijhih District., New Taipei City 221, Taiwan
 Phone: 886-2-8692-6789 Fax: 886-2-8692-6767
 www.aten.com E-mail: marketing@aten.com



© Copyright 2015 ATEN® International Co., Ltd.
 ATEN and the ATEN logo are trademarks of ATEN International Co., Ltd.
 All rights reserved. All other trademarks are the property of their respective owners.