

RC2000

10U/12U/15U Wall Mount Rack



Space Saving Wall Mount Rack to Enclose and Maximize Usage of Resources

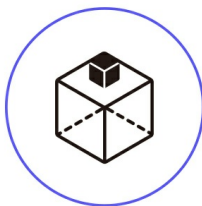


RC2000

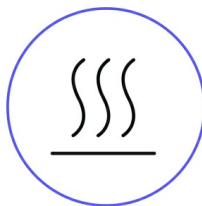
10U / 12U / 15U Wall Mount Rack



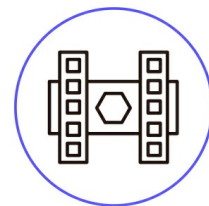
ATEN wall mount racks can be trusted to house your diverse array of assets, including switches, routers, and various networking and surveillance equipment. Our devotion to crafting the finest cabinets and enclosures stems from over 30 years of R&D dedicated to fulfilling the versatile needs of our clients. This is exemplified through our certifications and patents, including UL and CE. Additionally, our premium quality racks are EIA/ECA-310-E compliant, ensuring the overall design requirements for cabinets and racks are fully met.



Space Optimization



Improved Cooling and Ventilation



Wall Mountable

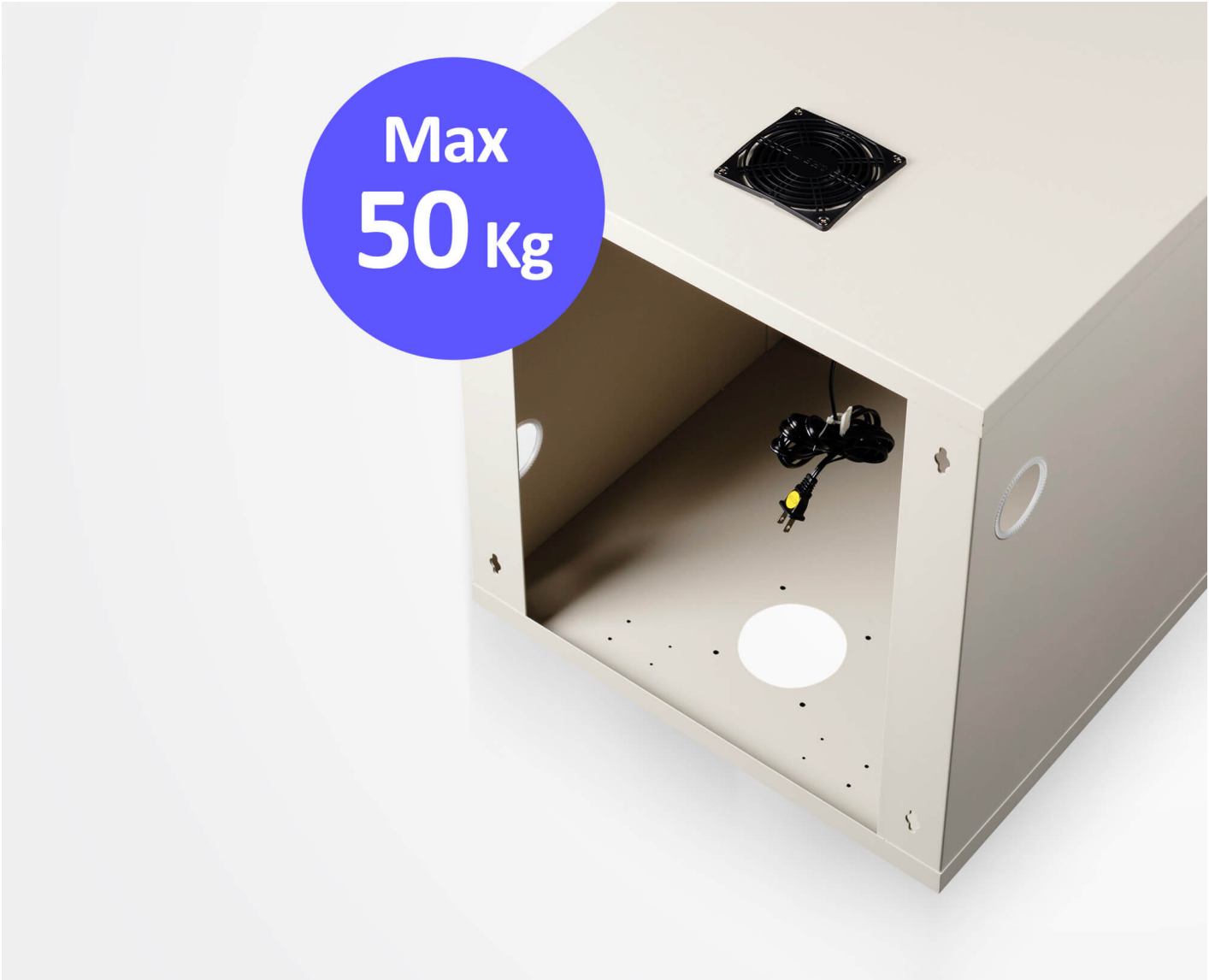
**Rack Mountable to Maximize Space**

Off-the-ground installation overcomes spacing and cabling limitations by maximizing space and avoiding entangled cabling

Robust and Sturdy Build

Crafted from bent SPCC steel, with maximum capacity of 50 Kg

Max
50 Kg





Easy Cabling Holes

Designed for Easy Installation & Maintenance

Cable holes deftly designed on both sides of the rack for easier cabling

Advanced Cooling Designs for Efficient Ventilation

45°slant heat dissipation holes are provided on the front of the top and bottom of the rack, for maximum heat dissipation and convection without sacrificing external aesthetics



45° Slant Heat Dissipation Holes

Contact Us

Get a quote for this product or get in touch with our sales experts

Get Quote

[Contact Sales](#)

Prevent Overheating to Extend Equipment Shelf Life

Top of the rack is equipped with 120V/230V AC fan for effective cooling and accelerated heating dissipation, protecting equipment from overheating and malfunctioning

**Applications**

ATEN's Wall Mount Racks are ideally suited for locations with tight and limited space, or placed higher up on the wall, such as classroom, train platform, security room, and retailer.



Train Platform



Classroom



Retailer




Security Room

Talk to Our Experts

If you prefer to have ATEN contact you, please complete the form and a representative will be in touch with you shortly

First Name *


Last Name *

- Country * 

Company *

Email *

Phone Number *

- Customer Type * 

Job Title *



Features

With more than 30 years of experience in R&D and manufacturing cabinet products, ATEN can tailor exclusive products for its customers based on their needs. Our cabinet products, all of which are extremely popular, have been certified by UL and by CE. All ATEN's rack products are EIA/ECA-310-E compliant. Our high-quality cabinets have multiple patents numbered: M377678, M385174, and M513193.

ATEN wall mount racks use a suspended design, and can be affixed on the walls of buildings. This makes them suitable for locations with limited space or when they need to be placed higher up on the wall, such as piping rooms in buildings, classrooms, and train platforms. The cabinets are sturdily built and are equipped with a 120V/230V AC fan, which prevents equipment malfunctions caused by overheating in the rack.

• Sturdy Structural Design

- Designed to be installed off the ground, solving the issues of limited space or difficult cabling
- Made from bent SPCC steel, maximum capacity of 50kg
- Cable holes are provided on both sides of the rack for easier cabling
- 45° heat dissipation holes are provided on the front of the top and bottom of the rack, for maximum heat dissipation and convection while not damaging the external aesthetics
- Comes with a fan (120V/230V AC) on the top of the rack as standard, providing faster heat dissipation and protecting the equipment from malfunctions
- Holes are provided on the left and right sides of the back of the rack for hanging, and wall plugs are provided for easy installation

• Certifications

- UL Certified and CE Certified
- Compatible with the latest specification of EIA/ECA-310-E

• Includes

- Wall mount rack enclosure frame × 1 pc
- Acrylic front door (with door lock and key) × 1 pc
- 120V /230V AC Fan × 1 pc
- M5 Mounting Screw × 20 pcs
- M5 Cage nut × 20 pcs
- Expansion bolt × 4 pcs

Specifications

Function	RC2000	RC2001	RC2002
Physical Properties			
Rack Height (U Spaces)	10U	12U	15U
Internal Height	448 mm	537 mm	671 mm
Overall Height	508 mm	597 mm	731 mm
Overall Depth	600 mm	600 mm	600 mm
Overall Width	560 mm	560 mm	560 mm
Color	White (RC2000W)	White (RC2001W)	White (RC2002W)
Enclosure Frame	SPCC	SPCC	SPCC
19" EIA Rails	SPCC	SPCC	SPCC
Door Type	Acrylic Front Door	Acrylic Front Door	Acrylic Front Door
Weight Loading (Static)	50 kg	50 kg	50 kg
Fan Type	120 VAC / 230VAC	120 VAC / 230VAC	120 VAC / 230VAC

ATEN International Co., Ltd.

3F., No.125, Sec. 2, Datong Rd., Sijhih District., New Taipei City 221, Taiwan
 Phone: 886-2-8692-6789 Fax: 886-2-8692-6767
 www.aten.com E-mail: marketing@aten.com



© Copyright 2015 ATEN® International Co., Ltd.
 ATEN and the ATEN logo are trademarks of ATEN International Co., Ltd.
 All rights reserved. All other trademarks are the property of their
 respective owners.