

UC8000

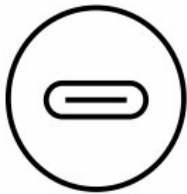
Podcast AI Audio Mixer | MicLIVE™ 6-CH





PODCAST AI AUDIO MIXER

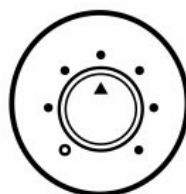
MicLIVE™ 6-CH



USB-C Audio In/Out



Smart-EQ



24 Voice Effects



Audio Ducking

OnAir Audio



AI Power Turns Budget Mics into Studio-grade Ones

MicLIVE™, the industry's first AI-optimized audio mixer, has built-in AI Smart-EQ that enhances your recordings to make your voice stand out with greater clarity. It optimizes your audio input to make entry-level microphones sound like high-end, studio-grade ones. Smart-EQ is trained through machine learning over millions of training runs to create an EQ that improves your sound. The result? Even a budget mic can now make your podcasts sound incredible.

The graphic features a background of a man in a recording studio wearing headphones, with a large, glowing 'AI' and 'MIC UPGRADE' text overlay. A central flow diagram shows 'Entry-level Microphone' on the left, an arrow pointing to a box labeled 'ATEN AI Smart-EQ Model', and another arrow pointing to 'High-quality Audio Output' on the right. Below each microphone image is a frequency response graph with a logarithmic x-axis labeled 20, 50, 100, 200, 500, 1k, 2k, 5k, 10k, 20k.

Professional Podcasting, Easier Than Ever

Complex audio engineering is simplified into a few simple taps from audio input processing to sound effect invoking. Create great sound with one click of AI Smart-EQ to create sound that usually only professionals know how to tune. Then use Voice FX to further polish your sound and invoke sound effects to enrich your recording.



Studio-grade Playback and Recordings

With two combo jack (XLR/6.3mm microphone or instrument) inputs, phantom power, and a studio-grade pre-amp, you can connect pro-level condenser mics and any instrument to get a crystal clear, low-noise signal with high-resolution 24bit/96kHz playback and recordings. Two headphone outputs allows for two-person monitoring, each with a dedicated volume control. Easily take remote calls or play background music from a smartphone thanks to 3.5mm TRRS input.



Everything You Need for Podcasts Is Here

Packed with a powerful set of features to streamline your podcast workflow and enrich your programs. Just one user can create a pro-level broadcast on their own.

<p>USB Audio Input Enables audio sources from your PC/Mac, such as a guest's call</p>	<p>Auto Ducking Lowers music volume automatically during dialogue</p>	<p>Voice FX 24 voice effects for personalizing your voice</p>	<p>Jingle Pads Enriches the program with sound effects</p>



Feature Article:

3 Reasons Why You Need the Right Audio Mixer for Podcasting

[Read Now!](#)

Voice FX – Fine-tune Your Voice

Personalize and optimize your voice in any scenario with Voice FX. With it you can switch among Pitch, Reverb, Male, and Female effects and spin the knob based on the performance scenario to personalize your vocal tone. Whether you're recording a talk or singing, Voice FX makes your voice stand out from the crowd.



Contact Us

Get a quote for this product or get in touch with our sales experts

[Get Quote](#)

[Contact Sales](#)

Enrich Your Program with Color-coded Jingle Pads

MicLIVE™ features eight customizable jingle pads for triggering sound effects in real time. Each pad is highly customizable. You can record direct to a pad from any of MicLIVE™'s inputs or assign audio and the pad's color from the computer app.



Mix Any Podcast Genre from Anywhere

Powered by USB 5V, MicLIVE™ can operate using USB bus power and also be powered by a mobile battery. Its truly mobile design allows you to carry it to any venue for mixing and streaming audio whether it's a talk, interview, music, or more.



Unlimited Control with the OnAir™ Audio App

The MicLIVE™ App allows access to every feature in the mixer, giving you additional control over DSP parameters such as compressor, equalizer, Echo, Filter, Pitch, Reverb, and more. You can also customize the jingle pads with icon, playback mode, color, and volume for a more personal style and to speed up your workflow.



Easy Connections. Easy Operation.



Talk to Our Experts

If you prefer to have ATEN contact you, please complete the form and a representative will be in touch with you shortly

First Name *

Last Name *

- Country *

Company *

Email *

Phone Number *

- Customer Type *

Job Title *



Features

The MicLIVE 6-CH is the industry's first AI-optimized audio mixer for podcasting as it adopts SmartEQ technology to deliver acoustic enhancement for an optimized voice recording experience. Integrating audio mixing equipment into a compact stage box housing, this audio mixer offers up to 6-channel audio inputs, a built-in DSP and AD / DA converter, and it adds audio up to 24 bit / 96 kHz to any USB-C-enabled laptop or tablet.

To polish users' audio creation, the MicLIVE 6-CH features the capability of varying a user's voice effect with 24 Voice FX programs, SmartEQ, the jingle pads that can save up to 8 special audio samples, and the auto ducking function. In addition, it ships with a built-in preamp that provides gain for the microphone's signal, and a phantom power (+48V) power supply, which is suitable for connecting condenser microphones.

Apart from its easy-to-use, flexible hardware design, the MicLIVE 6-CH works with dedicated ATEN software, OnAir Audio, which supports Windows and Mac OS, giving users complete control over every parameter while allowing them to simply assign audio samples from their computers through an intuitive interface.

Usually, broadcasting a live performance requires a team of professionals to assist with BGM or volume control, but thanks to the MicLIVE 6-CH, now just one user can create a pro-level broadcast. The MicLIVE 6-CH is an all-in-one solution tailor-made for podcasts, talk shows, livestreaming, worship, and music applications.

- All-in-one design simplifies audio mixing workflow for podcasting – offers up to 6-channel audio inputs, DSP and AD / DA converter, and adds audio up to 24-bit / 96 kHz to any USB-C-enabled laptop or tablet
- The industry's first AI-optimized audio mixer – enhances microphone audio quality with enhanced acoustic models, SmartEQ, so anyone can have a real-time, high-quality recording
- Jingle pads save up to 8 sound samples that can be customized from audio sources from a computer, microphone, and other audio inputs for a professional radio programming experience
- Contains 24 Voice FX programs, including 6 adjustments in reverb effect, 6 in pitch effect, and 12 in gender effect
- Audio routing and multichannel audio mixing – allow for mixing audio input signals and routing it to any of the available output interfaces
- Advanced reverb effects – enhance your vocals, instruments, and the entire mix for professional broadcast and post-production
- The auto ducking function lowers background music anytime one speaks, ensuring the speaker's voice is always heard, loud and clear, during broadcasting
- Diversified input interface options – supports audio media from professional XLR combo microphones, musical instruments, USB audio sources, and phone-in for mixing
- Built-in preamp that provides gain for instruments and the microphone's signal, and a phantom power supply that delivers reliable +48V phantom power for condenser microphones
- Supporting Windows and Mac OS, the OnAir Audio software gives users complete control over every parameter while allowing them to simply assign audio samples from their computers through an intuitive interface

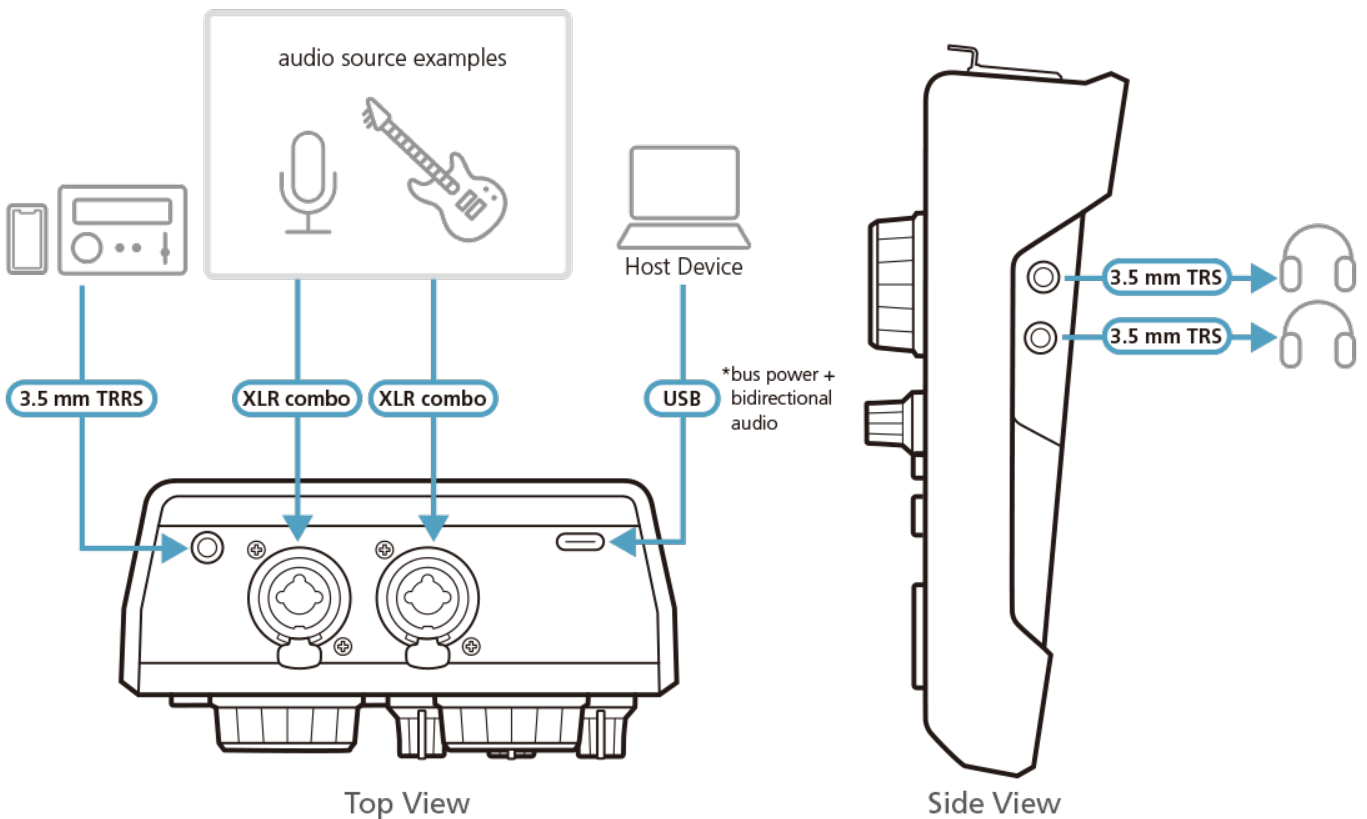
Specifications

Audio Inputs	
Interfaces	<p>XLR Combo: 2x XLR-3-31(1:GND, 2:HOT, 3:COLD) or 6.3mm (1/4") standard TRS jack (T:HOT, R: COLD, S:GND)</p> <p>Line-in: via 1/8" 4-pole TRRS phone female(T: Left, R: Right, R: GND, S: MIC. CTIA standard)</p> <p>USB Audio-in: via USB TYPE-C</p>
Audio Outputs	

Interfaces	<p>Line-out: via 1/8" 4-pole TRRS phone female (T: Left, R: Right, R: GND, S: MIC. CTIA standard)</p> <p>USB Audio-out: via USB TYPE-C</p> <p>Headphone Monitoring: 2x 1/8" TRS phone female</p>
Audio Sampling	24-bit/96kHz
Connection	1x USB TYPE-C female , USB bus-powered
Microphone Inputs	
Frequency Response	20Hz - 20kHz
Dynamic Range	90dB
THD+N	-82dB
Maximum Input Level	12.5mVrms
Gain Range	40dB (For Dynamic Microphone), 30dB (For Condenser Microphone)
Impedance	3K Ω (Typ)
Phantom power	+48VDC
Noise EIN	-128dBu or less
Instrument Inputs	
Frequency Response	20Hz - 20kHz
Dynamic Range	82dB
THD+N	-80dB
Maximum Input Level	440mVrms
Impedance	1M Ω
Line Inputs	
Frequency Response	20Hz - 20kHz
Dynamic Range	95dB
THD+N	-90dB
Maximum Input Level	1Vrms
Impedance	2.5K Ω (Typ)
Line Outputs	
Frequency Response	20Hz - 20kHz
Maximum output Level	1Vrms
Impedance	200 Ω
Headphone Outputs	
Frequency Response	20 Hz - 20 kHz
Maximum output Level	2Vrms
Impedance	10 Ω
Digital Audio	
ADC Dynamic Range	92dB
DAC Dynamic Range	95dB
Maximum Input Level	+4 dBu
Environmental	

Operating Temperature	0–40°C
Storage Temperature	-20–60°C
Humidity	0–80% RH, Non-condensing
OS Support	<p>System requirements for PC and Mac:</p> <ul style="list-style-type: none"> • Intel i3-series 2 GHz multicore processor (or AMD , Apple M1 equivalent) or faster • 2 GB RAM (8 GB or more recommended) • USB-C™ interface with USB 3.0 or higher compatibility • Windows 10 or higher , Mac OS® 10.11 or higher <p>System requirements for iPads:</p> <ul style="list-style-type: none"> • iPad Pro (3rd gen or later) • iPad Air (4th gen or later) iPad Mini (6th gen or later)with USB-C™ interface • iPad Pro (1st and 2nd gen) • iPad (5th gen or later) • iPad Air (3rd gen) • iPad Mini (5th gen) with phone Jack or adapter <p>OnAir-Audio Software:</p> <ul style="list-style-type: none"> -Windows 10 or higher, 64-bit -Mac OS 10.13 or higher, 64-bit
Power Consumption	<p>DC5V:2.55W:12BTU/h</p> <p>Note:</p> <ul style="list-style-type: none"> • The measurement in Watts indicates the typical power consumption of the device with no external loading. • The measurement in BTU/h indicates the power consumption of the device when it is fully loaded.
Physical Properties	
Housing	Plastic
Weight	0.42 kg (0.93 lb)
Dimensions (L x W x H)	13.05 x 18.09 x 6.27 cm (5.14 x 7.12 x 2.47 in.)
Note	For some of rack mount products, please note that the standard physical dimensions of WxDxH are expressed using a LxWxH format.

Diagram





Simply Better Connections

ATEN International Co., Ltd.

3F., No.125, Sec. 2, Datong Rd., Sijhih District., New Taipei City 221, Taiwan
Phone: 886-2-8692-6789 Fax: 886-2-8692-6767
www.aten.com E-mail: marketing@aten.com



© Copyright 2015 ATEN® International Co., Ltd.
ATEN and the ATEN logo are trademarks of ATEN International Co., Ltd.
All rights reserved. All other trademarks are the property of their
respective owners.